

- m - Modified land (Holocene)
- Qal - Alluvium (Holocene)
- Qf - Fan deposits (Holocene)
- Qmw - Mass-wastage deposits (Holocene)
- Qp - Peat deposits (Holocene)
- Qva - Advance outwash deposits
- Qvi(1) - Ice-contact deposits, Stage 1
- Qvi(2) - Ice-contact deposits, Stage 2
- Qvr(1) - Recessional outwash deposits, Stage 1
- Qvr(2) - Recessional outwash deposits, Stage 2
- Qvt - Till
- Qpf - Undifferentiated sedimentary deposits of pre-Fraser glaciation age (Pleistocene)
- Qpf(f) - Fine-grained deposits of pre-Fraser glaciation age (Pleistocene) - Predominantly silt and clay
- Qpog - Glacial deposits, pre-Olympia age
- Tb - Blakeley Formation of Weaver (1912) (Tertiary)
- Tpr - Renton Formation - Nonmarine fine- to medium-grained arkosic sandstone and siltstone containing abundant subbituminous coal beds and carbonaceous shale (Puget Group, Tertiary)
- Tpt - Tukwila Formation - Andesitic to dacitic volcanic sandstone, siltstone, shale, tuff-breccia, tuff, volcanic mudflow (lahar), carbonaceous shales, and minor lava flows or sills. (Puget Group, Tertiary)
- Strike and dip of bedding
- Fault
- 0- & 500-foot structure contours of the Muldoon coal seam
- Approximate outline of 2015 landslide

Modified after: Booth, D.B., Walsh, T.J., Goetz Troost, K., and Shimel, S.A., 2012, Geologic map of the east half of the Bellevue South 7.5' x 15' quadrangle, Issaquah area, King County, Washington: U.S. Geological Survey Scientific Investigations Map 3211, scale 1:24,000. (Available at <http://pubs.usgs.gov/sim/3211/>.)

Lidar source: USGS 3DEP King County, Washington Delivery 2 Lidar, Published 2022, Acquired 2021

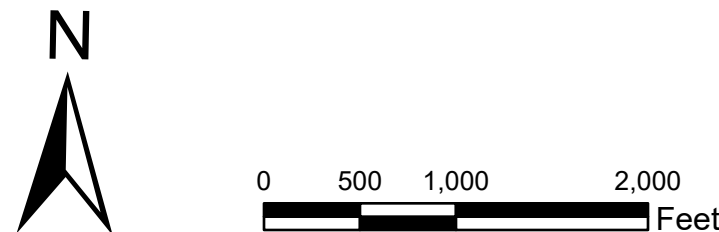


Figure 1: Geologic Map